

Installation Instructions:

Ensure within aperture is clean and free of debris, loose cement, and remove all dust from surfaces requiring installation.

Detail A - 20mm wide x 25mm depth annular to combustible pipes within drylined walls up to 120 minutes integrity & insulation.

- Select correct size polyethylene backer to tightly fit into minimum 20mm
- Form a ring around the pipe with polyethylene backer and fix the two ends together with tape, slide along the pipe into the opening to form a 25mm deep recess to the front of wall.
- Fill recess until flush with wall and trowel smooth.
- Repeat to the opposite side of the wall.

Pipe Type	Diameter mm	Thickness mm	Rating
PVC	40	1.9	EI 120
	125	4.8	
	125	8.2	
PE	40	3.7	EI 120
	110	3.4	E 120 I 90
	110	6.6	EI 120
ABS	40	2.7	EI 120
	114.3	7.2	E 120 I 90
	114.3	11.3	EI 120 I 60

Detail B, D & E - 300x100 aperture within partition up to 120 minutes integrity & insulation suitable for cables and combustible pipes up to 63mm

- Ensure services are 20mm minimum from edge of opening, pipes and cable bunches 20mm apart.
- Fill void with 33kg/m3 rock mineral fibre to form a 25mm recess to plasterboard face.

Penetration Type	Type	Dia mm	Rating
Cable Bundle	Type F	40 mm	EI 120 I 90
	Type A1		EI 120
Cable	Type A2		
	Type A3		
	Type F		
	Type B		
Pipe Type	Dia mm	Thickness	Rating
HDPE with 15mm Cooper	63	5.8	EI 120
HDPE Gas Pipe	63	5.8	EI 120

Detail C - 20mm wide x 25mm depth annular to insulated non-combustible pipes.

- Install as details A

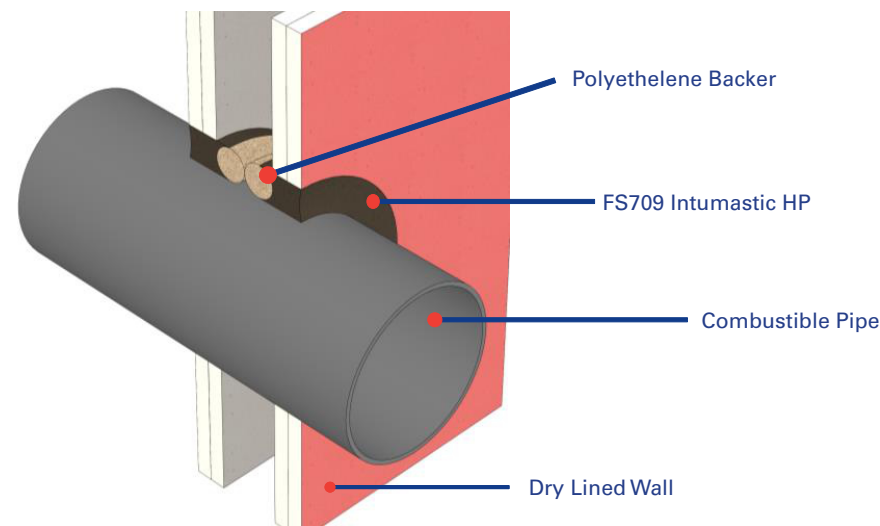
Pipe Type	Dia mm	Thickness mm	Insulation	Rating
Copper / Steel	15	0.7 to 14	30m Glass Fibre	EI 120
	160	2 to 14		EI 120 I 90
Copper / Steel	40	0.7 to 14	33mm Nitrile	EI 120
	160	2 to 14		EI 120 I 90
Copper / Steel	15	0.7	N/A	EI 120 I 60

Detail F - 600 x 140 aperture within partition up to 120 minutes integrity & insulation suitable for full en cable set.

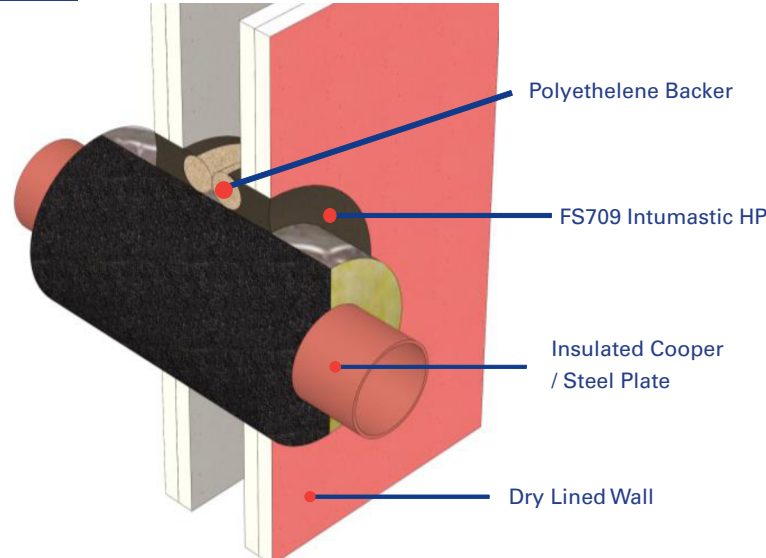
- Install as details B,D & E

Penetration Type	Type	Size mm	Rating
Cable Ladders/Trays		Up to 500mm	Up to EI 120
Full EN Cable Set	Various		Up to EI 120

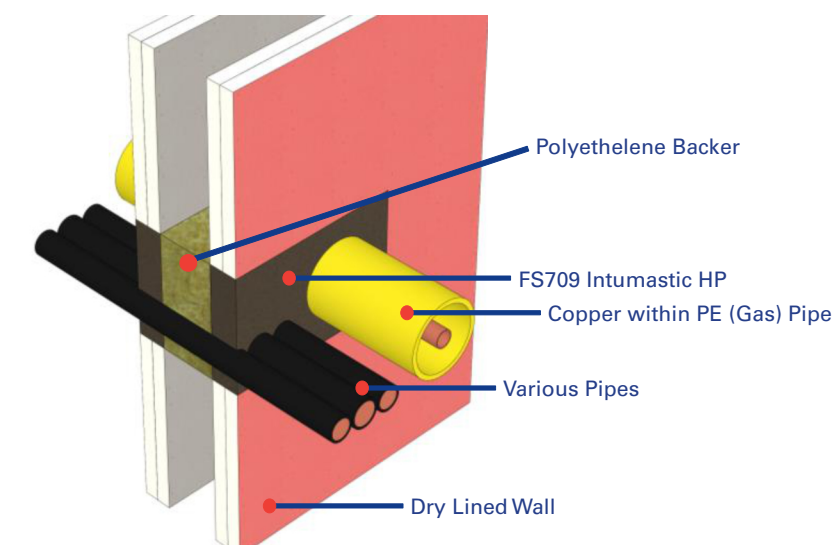
Detail A



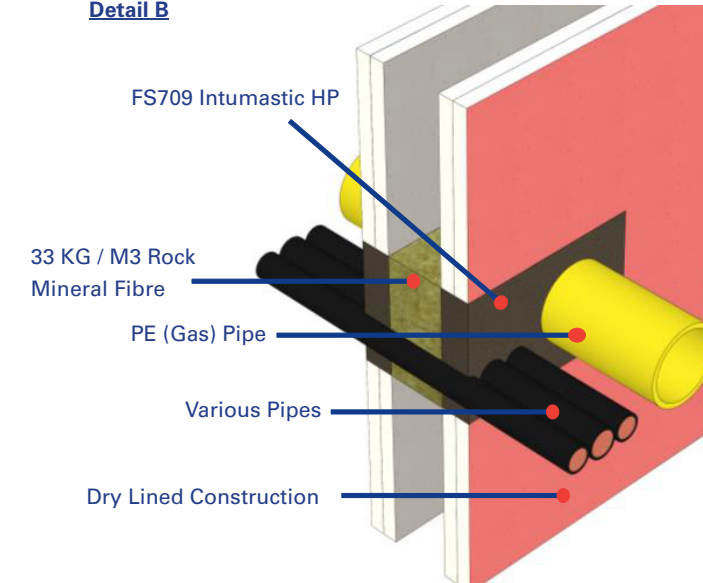
Detail C



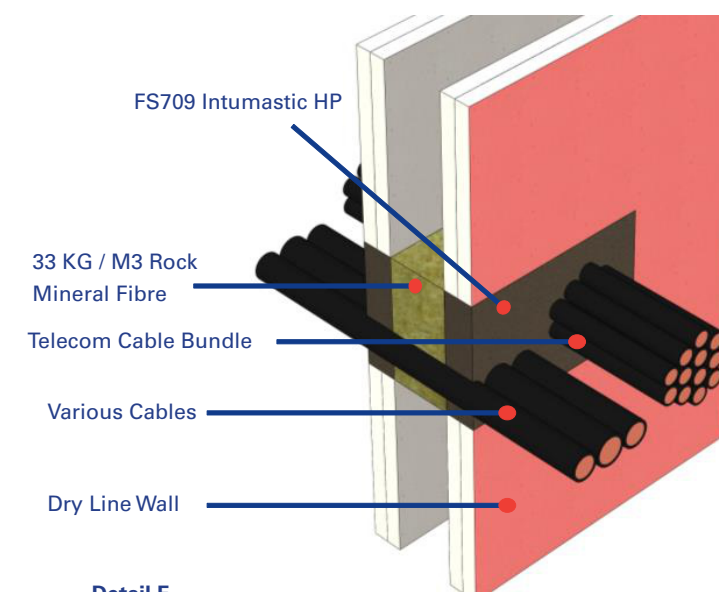
Detail E



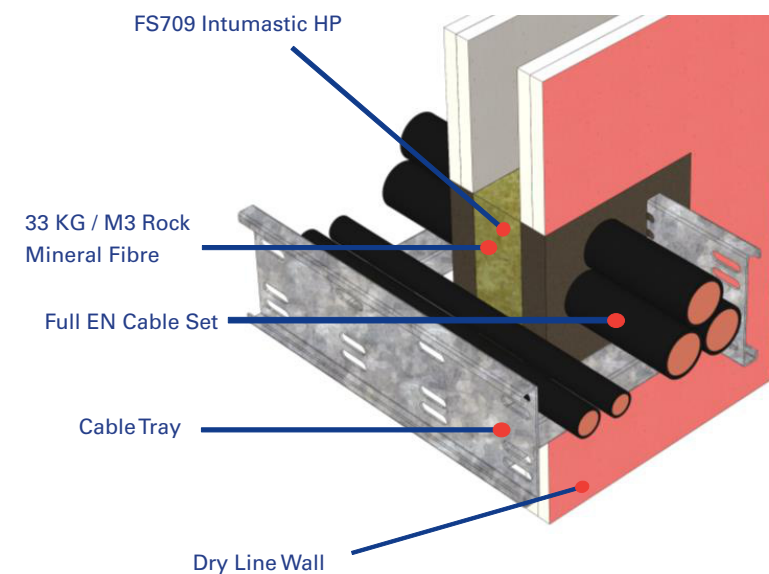
Detail B



Detail D



Detail F



Test Information:

Test: [BSEN 136-1: 1999](#), [BSEN 1366-3:2009](#), [BSEN:1366-4:2006 +A1:2020](#)

Test Reference [WF375063](#)

Products:

FS709 Intumastic HP

Scenario:

Annular Penetration Seals

Penetrations:

Various

Construction:

50mm C stud at 600mm centres, with 2 layers of 12.5mm type F plasterboard each side of wall. Applicable to insulated, non insulated flexible wall construction from 100mm thickness and thicker.

Nullifire details will only perform to the substrates performance capabilities. This applies to fire and acoustic. It is the responsibility of the purchaser to ensure suitability. If in doubt call technical.

Drawing Title:

FS709 Intumastic HP to various penetrations within plasterboard

Drawing Reference No:

PS-008

A3