

## Installation Instructions:

Ensure within aperture is clean and free of debris, loose cement, and remove all dust from surfaces requiring installation.

### Detail A: Single FB750 Intubatt up to 120 Integrity, 60 Insulation

1. Cut FB750 Intubatt to tightly fit into aperture.
2. Coat FB750 Intubatt edges and fit into opening at required position
3. Note: Adoption of additional layer of FB750 Intubatt as per "Detail D" will provide up to 120 minutes insulation and integrity.

### Detail B – Single FB750 Intubatt within FB750 Intubatt lined opening rated as Detail A

1. Cut FB750 Intubatt to form lining to aperture to bridge cavity, ensuring FB750 Intubatt finishes flush with face of concrete / block-work wall.
2. Bond FB750 Intubatt lining to the opening with FS702 Intumastic
3. Fit FB750 Intubatt into opening ensuring good bonding to framing and concrete / blockwork edge.
4. Cut FB750 Intubatt to tightly fit into FB760 Intubatt Lining
5. Note: Adoption of additional layer of FB750 Intubatt as per "Detail D" will provide up to 120 minutes insulation and integrity.

### Detail C – Double pattress FB750 Intubatt rated up to 120 Integrity and Insulation

1. Cut FB750 Intubatt to required size and shape, ensuring the FB750 Intubatt will overlap the concrete/ blockwork wall a minimum of 75mm around the opening.
2. Apply FS702 Intumastic to concrete/blockwork where the FB750 Intubatt is to be fitted, to bond FB750 Intubatt to concrete / blockwork.
3. Firmly press FB750 Intubatt to concrete/blockwork to ensure bond.
4. Fix the FB750 Intubatt to the concrete / blockwork using minimum 75mm long steel screws and 25mm diameter steel washers. Fixings should not exceed 50mm from any edge and not exceeding 200mm centres.
5. Repeat to opposite side of the wall if required.

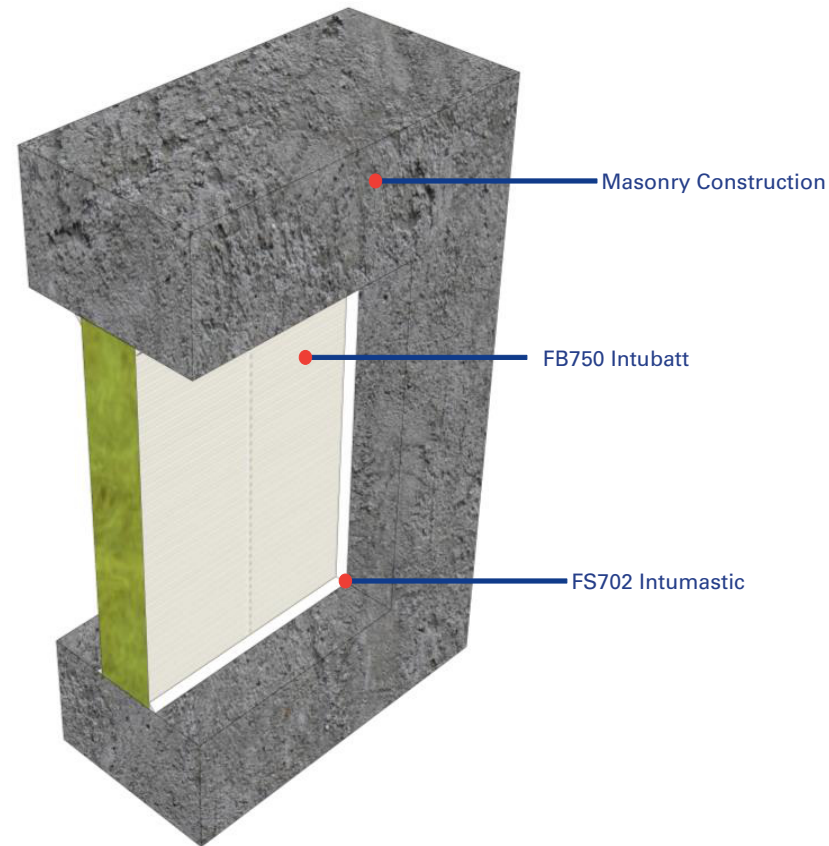
### Detail D – Double FB750 Intubatt up to 240 Integrity and Insulation

1. Cut FB750 Intubatt to tightly fit into aperture
2. Coat FB750 Intubatt edges and fit into opening ensuring FB750 Intubatt finishes flush with plasterboard face.
3. Repeat to opposite side of the wall if required.

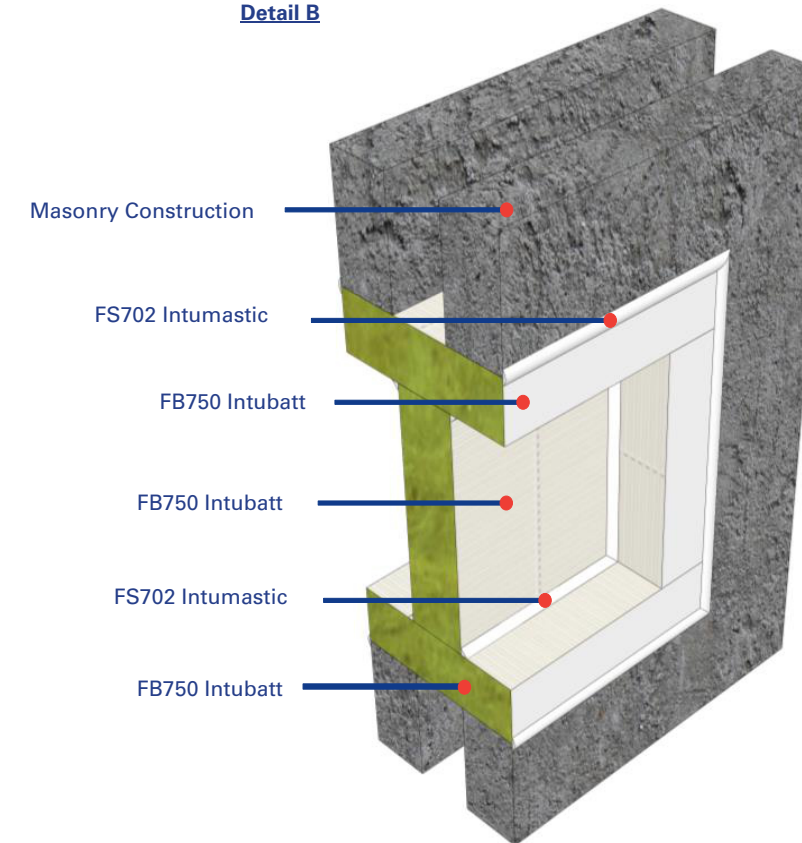
### General

1. Coat all joints, exposed edges of FB750 Intubatt and damages to coating with FS702 Intumastic Brush Grade.
2. Apply FS702 Intumastic bead to all FB750 Intubatt Interfaces.

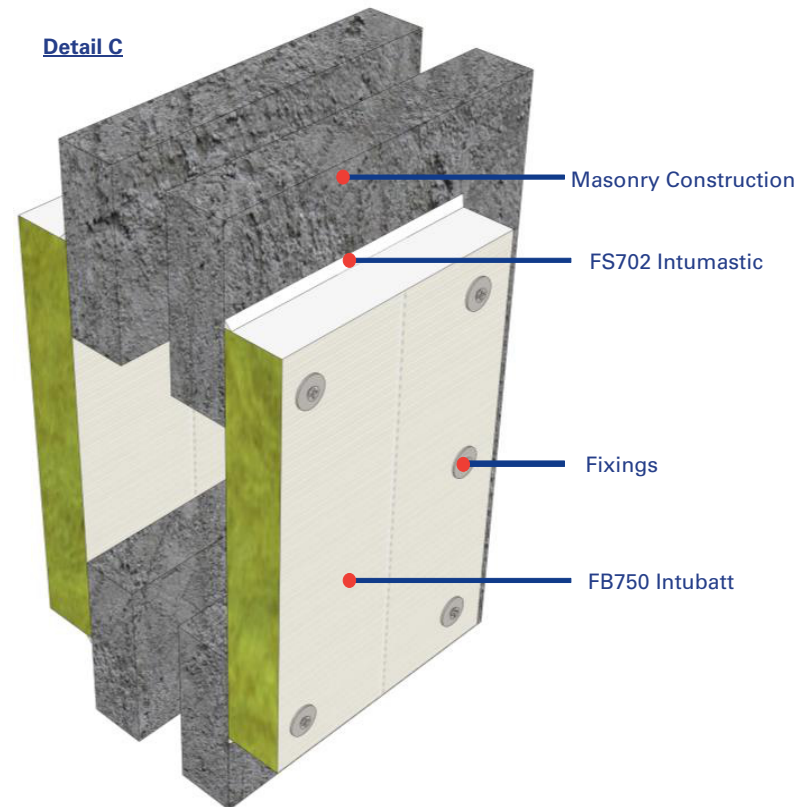
Detail A



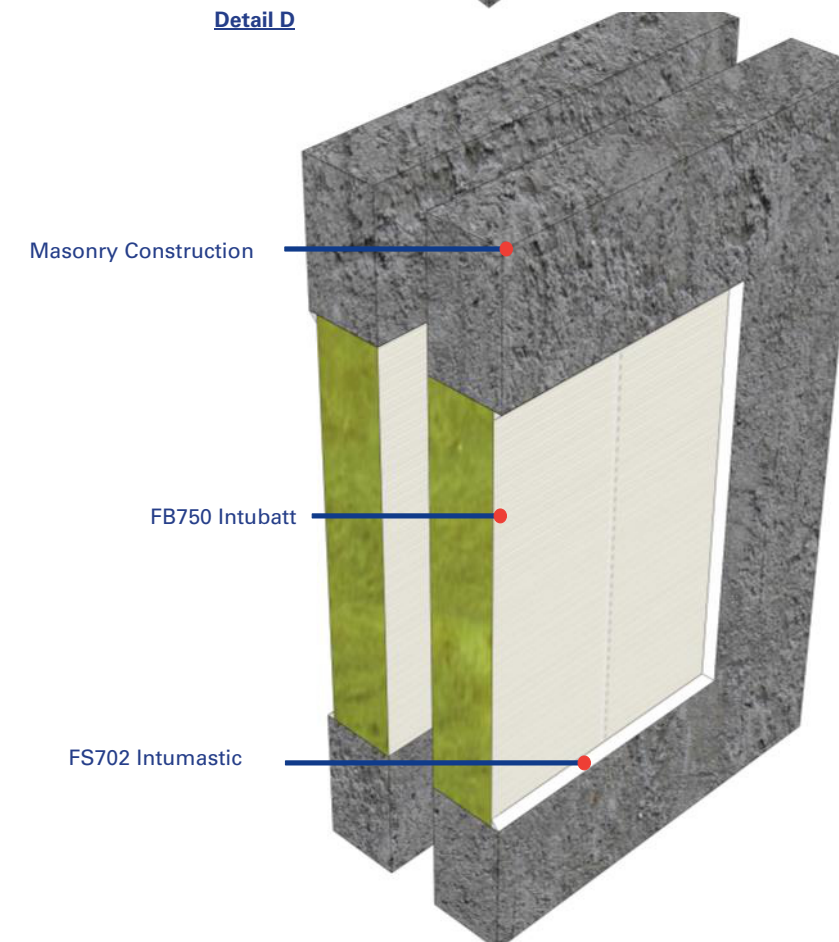
Detail B



Detail C



Detail D



## Test Information:

**Test: BSEN1366 / BS476**

### Products:

FB750 Intubatt & FS702 Intumastic

### Scenario:

Penetration through concret / blockwork wall construction

### Penetrations:

Various penetrations tested, see drawings TBC for specific installation guidelines

### Void Size:

1190mm x unlimited length above FB750 Intubatt length 1200 framework required.

### Fire Resistance:

Tested up to 240 minutes. Please see specific detail for fire rating. Fire ratings contained herein are based upon plain seals only.

### Acoustic:

Test: BRE 224463  
FB750 Intubatt 1, Two Layers  
Void 1.0m2 59dB

Test: BM Trada Z/12017  
FB750 Intubatt 2 One Layer  
Void 0.6m2 36dB

FB750 Intubatt 2 Two Layer  
Void 0.3m2 57dB  
Void 0.6m2 50dB

Nullifire details will only perform to the substrates performance capabilities. This applies to fire and acoustic. It is the responsibility of the purchaser to ensure suitability. If in doubt call technical.

## Drawing Title:

Openings within blockwork/concrete wall construction.

## Drawing Reference No:

PS-001